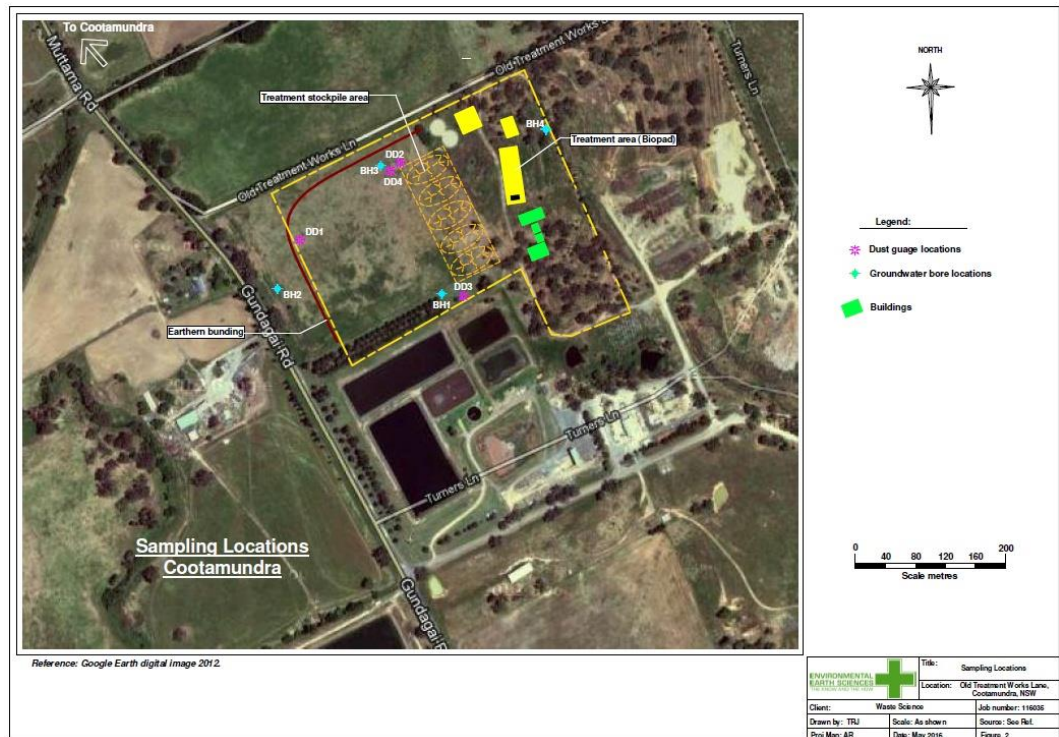


**TABLE 1 LICENCE INFORMATION**

Reporting Information	
Environment Protection Licence Number	13413
Link to Full Licence	<a href="http://www.epa.nsw.gov.au/prpoeoapp/Detail.aspx?instid=13413&amp;id=13413&amp;option=licence&amp;searchrange=licence&amp;range=P_OEO%20licence&amp;prp=no&amp;status=Issued">http://www.epa.nsw.gov.au/prpoeoapp/Detail.aspx?instid=13413&amp;id=13413&amp;option=licence&amp;searchrange=licence&amp;range=P_OEO%20licence&amp;prp=no&amp;status=Issued</a>
Licensee's Name	EESI Contracting Pty Ltd
Licensee's Facility Address	Waste Science Pty Ltd Soil Recycling Facility 17 Turners Lane Cootamundra NSW 2590
Location of Monitoring Points	see map
Monitoring Frequency Required	EPL Monitoring Locations 2-4: Annually (1 sample per year) EPL Monitoring Location 5: 6-Monthly (2 samples per year for all analytes except for Heavy Metals (1 sample))



**TABLE 2 EPL MONITORING LOCATION 2 – GROUNDWATER BOREHOLE BH1**

Analyte	BH1						
	Monitoring Event Date	units	26/03/2018	05/03/2019	18/03/2020	04/03/2021	17/03/22
pH	pH	7.52	7.65	7.43	7.76	7.89	7.7
Total Phenolics / Total Phenols*	mg/L	<0.05	<0.05	<0.05	<0.05	<0.05	<0.05
Total PAH	mg/L	<0.0005	<0.0005	<0.0005	<0.0005	<0.0005	<0.0005
Benzene	mg/L	<0.001	<0.001	<0.001	<0.001	<0.001	<0.001
TRH C6-C10	mg/L	<0.02	<0.02	<0.02	<0.02	<0.02	0.04
TRH C10-C40	mg/L	<0.1	<0.1	<0.1	<0.1	<0.1	<0.1
Aluminium	mg/L	<0.01	<0.01	<0.01	<0.01	--	<0.01
Arsenic	mg/L	<0.001	<0.001	<0.001	<0.001	<0.001	0.001
Cadmium	mg/L	<0.0001	<0.0001	<0.0001	<0.0001	<0.0001	<0.0001
Chromium	mg/L	<0.001	<0.001	<0.001	<0.001	<0.001	<0.001
Cobalt	mg/L	0.001	0.002	0.002	0.001	--	0.002
Copper	mg/L	0.002	0.001	0.002	<0.001	<0.001	<0.001
Lead	mg/L	<0.001	<0.001	<0.001	<0.001	<0.001	<0.001
Manganese	mg/L	0.066	0.089	0.069	<0.001	--	0.358#
Nickel	mg/L	0.09	0.009	0.008	0.007	0.002	0.007
Selenium	mg/L	<0.01	<0.01	<0.01	<0.01	--	<0.01
Zinc	mg/L	<0.005	<0.005	<0.005	<0.005	<0.005	<0.005
Boron	mg/L	0.27	0.25	0.18	0.22	--	0.32
Iron	mg/L	<0.05	<0.05	<0.05	<0.05	--	<0.05
Mercury	mg/L	<0.0001	<0.0001	<0.0001	<0.0001	<0.0001	<0.0001

- Analysis not undertaken

# Sediment during sampling likely to have resulted in elevated Manganese

**TABLE 3 EPL MONITORING LOCATION 3 – GROUNDWATER BOREHOLE BH2**

Analyte	BH2						
	units	26/03/2018	05/03/2019	18/03/2020	04/03/2021	17/03/22	22/03/2023
<b>Monitoring Event Date</b>							
<b>pH</b>	pH	7.68	7.73	7.60	7.90	7.66	7.87
<b>Total Phenolics / Total Phenols*</b>	mg/L	<0.05	<0.05	<0.05	<0.05	<0.05	<0.05
<b>Total PAH</b>	mg/L	<0.0005	<0.0005	<0.0005	<0.0005	<0.0005	<0.0005
<b>Benzene</b>	mg/L	<0.001	<0.001	<0.001	<0.001	<0.001	<0.001
<b>TRH C6-C10</b>	mg/L	<0.02	<0.02	<0.02	<0.02	<0.02	<0.02
<b>TRH C10-C40</b>	mg/L	<0.1	<0.1	<0.1	<0.1	<0.1	<0.1
<b>Aluminium</b>	mg/L	<0.01	<0.01	<0.01	<0.01	--	<0.01
<b>Arsenic</b>	mg/L	<0.001	<0.001	<0.001	<0.001	<0.001	<0.001
<b>Cadmium</b>	mg/L	<0.0001	<0.0001	<0.0001	<0.0001	<0.0001	<0.0001
<b>Chromium</b>	mg/L	<0.001	<0.001	<0.001	0.002	<0.001	<0.001
<b>Cobalt</b>	mg/L	<0.001	0.002	<0.001	<0.001	--	<0.001
<b>Copper</b>	mg/L	<0.001	<0.001	0.002	<0.001	<0.001	<0.001
<b>Lead</b>	mg/L	<0.001	<0.001	<0.001	<0.001	<0.001	<0.001
<b>Manganese</b>	mg/L	0.020	0.232#	0.005	0.01	--	0.009
<b>Nickel</b>	mg/L	0.003	0.007	0.004	0.002	0.004	0.003
<b>Selenium</b>	mg/L	<0.01	<0.01	<0.01	<0.01	--	<0.01
<b>Zinc</b>	mg/L	<0.005	<0.005	<0.005	<0.005	<0.005	<0.005
<b>Boron</b>	mg/L	0.14	0.12	0.05	0.13	--	0.25
<b>Iron</b>	mg/L	<0.05	<0.05	<0.05	<0.05	--	<0.05
<b>Mercury</b>	mg/L	<0.0001	<0.0001	<0.0001	<0.0001	<0.0001	<0.0001

- Analysis not undertaken

# Sediment during sampling likely to have resulted in elevated Manganese

**TABLE 4 EPL MONITORING LOCATION 4 – GROUNDWATER BOREHOLE BH3**

Analyte	BH3						
	Monitoring Event Date	units	26/03/2018	05/03/2019	18/03/2020	04/03/2021	17/03/22
<b>pH</b>	pH	7.52	7.49	7.29	7.75	7.66	7.72
<b>Total Phenolics / Total Phenols*</b>	mg/L	<0.05	<0.05	<0.05	<0.05	<0.05	<0.05
<b>Total PAH</b>	mg/L	<0.0005	<0.0005	<0.0005	<0.0005	<0.0005	<0.0005
<b>Benzene</b>	mg/L	<0.001	<0.001	<0.001	<0.001	<0.001	<0.001
<b>TRH C6-C10</b>	mg/L	<0.02	<0.02	<0.02	<0.02	<0.02	<0.02
<b>TRH C10-C40</b>	mg/L	<0.1	<0.1	<0.1	<0.1	<0.1	<0.1
<b>Aluminium</b>	mg/L	<0.01	<0.01	<0.01	<0.01	--	<0.01
<b>Arsenic</b>	mg/L	0.001	<0.001	<0.001	<0.001	<0.001	0.001
<b>Cadmium</b>	mg/L	<0.0001	<0.0001	<0.0001	<0.0001	<0.0001	<0.0001
<b>Chromium</b>	mg/L	<0.001	<0.001	<0.001	<0.001	<0.001	<0.001
<b>Cobalt</b>	mg/L	<0.001	0.014	0.001	<0.001	--	<0.001
<b>Copper</b>	mg/L	<0.001	<0.001	0.002	<0.001	0.002	<0.001
<b>Lead</b>	mg/L	<0.001	<0.001	<0.001	<0.001	<0.001	<0.001
<b>Manganese</b>	mg/L	0.106	4.04#	0.550	0.059	--	0.177
<b>Nickel</b>	mg/L	0.004	0.016	0.015	0.003	0.006	0.003
<b>Selenium</b>	mg/L	<0.01	<0.01	<0.01	<0.01	--	<0.01
<b>Zinc</b>	mg/L	<0.005	<0.005	<0.005	<0.005	<0.005	<0.005
<b>Boron</b>	mg/L	0.20	0.17	0.07	0.20	--	0.32
<b>Iron</b>	mg/L	<0.05	<0.05	<0.05	<0.05	--	<0.05
<b>Mercury</b>	mg/L	<0.0001	<0.0001	<0.0001	<0.0001	<0.0001	<0.0001

- Analysis not undertaken

# Sediment during sampling likely to have resulted in elevated Manganese

**TABLE 5 EPL MONITORING LOCATION 5 – GROUNDWATER BOREHOLE BH4**

Analyte	BH4								
	Monitoring Event Date	units	05/03/2019	16/09/2019	30/03/2020	16/09/2020	04/03/2021	9/9/21	17/03/22
<b>pH</b>	pH	7.36	7.94	7.39	7.45	7.47	--	7.24	7.29
<b>Total Phenolics / Total Phenols*</b>	mg/L	<0.05	<0.05	<0.05	<0.05	<0.05	<0.05	<0.05	<0.05
<b>Total PAH</b>	mg/L	<0.0005	<0.0005	<0.0005	<0.0005	<0.0005	<0.0005	<0.0005	<0.5
<b>Benzo(a)pyrene</b>	mg/L	<0.0005	<0.0005	<0.0005	<0.0005	<0.0005	<0.0005	<0.0005	<0.0005
<b>Benzene</b>	mg/L	<0.001	<0.001	<0.001	<0.001	<0.001	<0.001	<0.001	<1
<b>TRH C6-C10</b>	mg/L	<0.02	<0.02	<0.02^	<0.02^	<0.02	<0.02	<0.02	<0.02
<b>TRH C10-C40</b>	mg/L	<0.01	<0.01	<0.01^	<0.01^	<0.1	<0.1	<0.1	<0.1
<b>Aluminium</b>	mg/L	<0.01	<0.01	<0.01	<0.01	<0.01	0.35	--	<0.01
<b>Arsenic</b>	mg/L	<0.001	<0.001	<0.001	0.001	<0.001	0.001	0.001	<0.001
<b>Cadmium</b>	mg/L	<0.0001	<0.0001	<0.0001	<0.0001	<0.0001	<0.0001	0.0005	<0.0001
<b>Chromium</b>	mg/L	<0.001	<0.001	<0.001	<0.001	<0.001	0.002	<0.001	<0.001
<b>Cobalt</b>	mg/L	<0.001	<0.001	0.002	0.003	<0.001	<0.001	--	0.003
<b>Copper</b>	mg/L	0.002	<0.001	0.003	0.002	<0.001	0.009	0.002	0.002
<b>Lead</b>	mg/L	<0.001	<0.001	<0.001	<0.001	<0.001	0.001	--	<0.001
<b>Manganese</b>	mg/L	0.536#	0.578#	2.01#	0.785#	0.342#	0.388#	0.006	2.04#
<b>Nickel</b>	mg/L	0.011	0.009	0.012	0.014	0.016	0.008	0.023	0.022
<b>Selenium</b>	mg/L	<0.01	<0.01	<0.01	<0.01	<0.01	<0.01	--	<0.01
<b>Zinc</b>	mg/L	<0.005	<0.005	0.013	0.020	0.012	0.026	0.059	0.006
<b>Boron</b>	mg/L	0.19	0.23	0.36	0.15	0.14	0.14	--	0.24
<b>Iron</b>	mg/L	<0.05	<0.05	<0.05	<0.05	<0.05	0.55		<0.05
<b>Mercury</b>	mg/L	<0.0001	<0.0001	0.0003	<0.0001	<0.0001	<0.0001	<0.0001	<0.0001
<b>Cyanide</b>	mg/L	<0.004	<0.004	<0.004	<0.004	<0.004	<0.004	<0.004	<0.00.4

- Analysis not undertaken

^ Silica gel cleanup

# Sediment during sampling likely to have resulted in elevated Manganese